

Sigenergy

Empower your business

Sigenergy focuses on developing cutting-edge home and business energy solutions, with products ranging from energy storage systems to solar inverters and EV chargers. Our world-class R&D team of hundreds of top industry experts shares the vision of making the world greener via continuous innovation. With global sales and services, we aim to become our customers' most trusted partner on their journey to a more sustainable future.

500+

Employees
July 2023

120+

Patents Applied
July 2023

6 GWh

Battery Production Capacity

70%

R&D Personnel

20+

Countries

12 GW

Power Production Capacity

Get to know Sigenergy

Full Product Portfolio

SigenStor



SigenStor EC
SigenStor AC

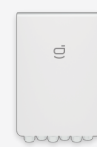
SigenStor EVDC

SigenStor BAT

mySigen
App



Sigen
Gateway



Sigen Hybrid
Sigen PV Max



Sigen
EVAC



Sigen
CommMod



Sigen
Sensor



Contact Sigenergy



Website



LinkedIn



YouTube

The information on this file is provided on an "as is" basis. To the fullest extent permitted by law, Sigenergy Technology Co., Ltd. excludes all representations and warranties relating to this file and its contents or which is or may be provided by any affiliates or any other third party, including in relation to any inaccuracies or omissions in this file.



ENJOY GREEN ENERGY

Achieve Together with Sigenergy



Let numbers talk

Know Sigenergy from facts



SigenStor

The world's first

5-in-One

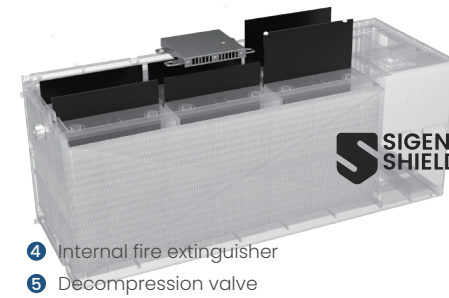


The world's first
GPT-4
empowered
mySigen App

5 layers

Battery protection

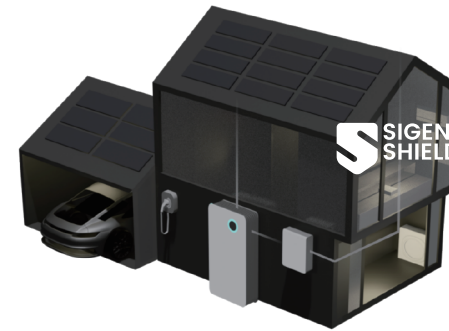
- 1 Full coverage temp. detection
- 2 Aerogel insulated pads
- 3 High-temp. resistance insulated pads



4 layers

System protection

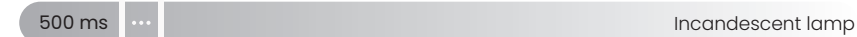
- 1 PV disconnection protection
- 2 DC ground-fault protection
- 3 Grid fault protection
- 4 DC bus protection



0 ms

Quick switch to backup mode

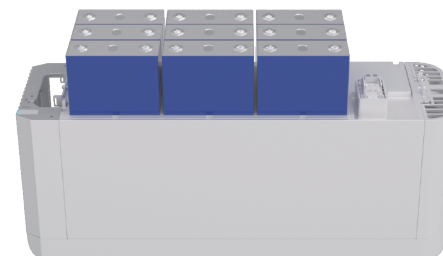
Sigen power control algorithm, smooth running of home loads.



280 Ah

Long cycle-life battery cell

- 9 battery cells in one 8 kWh pack
- Human-safe battery voltage
- 32% higher energy/volume density



15 mins

Stackable installation

Quick self-guided connectors



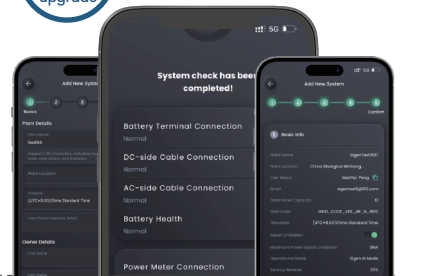
5 mins

Fast commissioning

- Step 0 Scan to add a new system
- Step 1 Fill out details
- Step 2 Fast software upgrade
- Step 3 Confirm preset parameters
- Step 4 One-click full system check
- Step 5 Confirm

2 mins

OTA software upgrade



10 pcs

Max. connections in parallel

480 kwh

Max. energy capacity

1~10 connectable on demand
Auto. detection & networking
No need to set devices individually



1-click

Full system diagnosis

One-click diagnosis on one SigenStor or entire multi-connections.
Detailed check on cabling & batteries status

